



## Fentiman Way

Hornchurch, RM11 3XY

**Guide price £156,000 - £160,000**



1



1



1



C

Guide Price £156,000 - £160,000. Ideally located for Hornchurch Town centre is this one bedroom third floor retirement property, the accommodation includes, entrance hall, reception room with open plan kitchen area, bedroom with built in appliances and bathroom. In addition, there is residents communal parking, residents lounge and communal gardens.



Entrance Hall

Entrance door, carpet, cupboard, emergency pull cord.

Reception Room

17'6 x 10'4 (5.33m x 3.15m)  
Double glazed bay window to rear, textured and coved ceiling, emergency pull cord.

Kitchen

7'4 x 5'5 (2.24m x 1.65m)  
Textured and coved ceiling, vinyl flooring, stainless steel single drainer sink, electric cooker point, wall and base units, part tiled walls.

Bedroom

12' x 8'9 (3.66m x 2.67m)  
Double glazed window to rear, carpet, emergency pull

cord, textured and coved ceiling, electric heater, built in wardrobe.

Bathroom

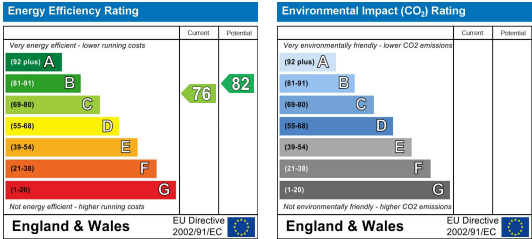
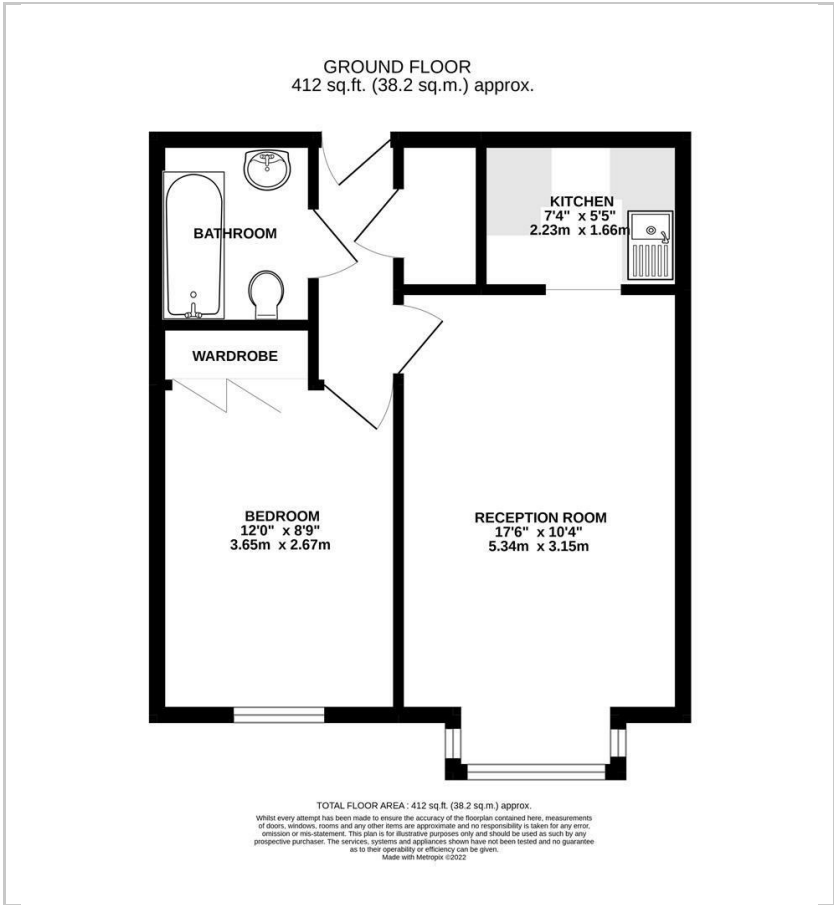
Panelled bath with electric shower, low level WC, vanity wash hand basin, vinyl flooring, tiled walls, heated towel rail.

Communal Parking

Residents communal parking area.

Communal Gardens

Residents communal gardens.



These particulars, whilst believed to be accurate are set out as a general outline only for guidance and do not constitute any part of an offer or contract. Intending purchasers should not rely on them as statements of representation of fact, but must satisfy themselves by inspection or otherwise as to their accuracy. No person in this firms employment has the authority to make or give any representation or warranty in respect of the property.